

THE WETLANDS CONSERVANCY

IAN PETERSON-NEDRY PRESERVE (Woahink Bog), located four miles south of Florence, Oregon on the eastern shoreline of Woahink Lake, is part of a 40-acre preserve owned by The Wetlands Conservancy. This ecologically significant, locally rare floating lake-mat community includes the only known Oregon occurrence of the globally significant Labrador Tea/darlingtonia/sphagnum plant association.

MUD SLOUGH WETLAND, located in the Willamette Valley west of Salem, is one of the most diverse, productive wetlands in western Oregon. The 426 acre wetland features a range of diverse shallow water habitats, wetland prairie and shrub communities, and a deep water pond.

HAPP WETLAND at Beaver Creek Marsh is a 78-acre pristine coastal wetland near Ona Beach just south of Newport. It is one of the few remaining undisturbed freshwater wetlands on the west coast.

YAQUINA ESTUARY is the site of negotiations for acquisitions and conservation easements of over 500 acres. Acquisitions should close in early 2006.



THE WETLANDS CONSERVANCY
PO Box 1195, Tualatin, Oregon 97062
www.wetlandsconservancy.org
503.691.1394

CONSERVE



Mud Slough Preserve, Willamette Valley



Cinnamon Teal nest and eggs



Ian Peterson-Nedry Preserve, Central Coast

oregon's greatest wetlands

The Wetlands Conservancy promotes community and private partnerships to permanently protect and conserve Oregon's greatest wetlands.

Oregon's Greatest Wetlands provides the foundation for a statewide wetlands conservation program. It includes an ambitious goal of working with others to permanently conserve 12,000 acres of wetlands in Oregon.

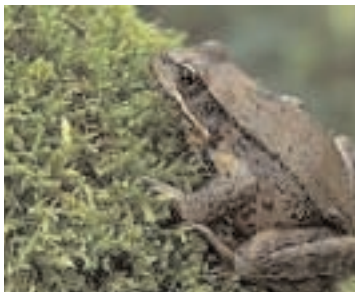
The website map.oregonwetlands.net presents a dynamic map of the state's most biologically important wetlands and provides a tool for the exchange of information relating to these endangered landscapes. We are also working in partnerships with communities in the Yaquina, Alsea and Beaver Creek Watersheds of the central coast, the Deschutes Basin and Scappoose Watershed to develop and implement wetland conservation strategies.



Big Summit Prarie, Central Oregon



Beaver Creek Marsh, Central Coast



Pacific Treefrog



American Avocet



The Oregon's Greatest Wetlands map identifies 130 of Oregon's most biologically important wetlands.

THE
WETLANDS
CONSERVANCY



SOLARIZATION involves placing a sheet of black or clear plastic over the area infested by weeds so that solar radiation on the plastic increases the temperature underneath and kills the vegetation. TWC has been using solarization and replanting at Pascuzzi Pond and Knez Preserves to remove invasive species and replace them with native species that promote wetland health.

THE WETLANDS CONSERVANCY
PO Box 1195, Tualatin, Oregon 97062
www.wetlandsconservancy.org
503.691.1394

collaborate



promoting stewardship

The Wetlands Conservancy promotes community and private partnerships to permanently protect and conserve Oregon's greatest wetlands.

TWC designs and implements collaborative strategies to sustain the health of wetlands. TWC works with local communities, land trusts, watershed councils, individual landowners and resource managers to promote local stewardship, restoration and acquiring properties.

Management of invasive plants is a major challenge. Invasive weeds will often displace native plants and dominate the landscape if left un-maintained. TWC is involved in researching, implementing and sharing invasive plant management methods.



Steve Berliner of Friends of Kellogg/Mt. Scott Creeks and Michelle Coffron, Outreach Coordinator walking Kellogg Creek mapping the location of invasive plants.



ABOVE: TWC property committee members surveying Minthorn Springs Preserve.



Belted Kingfisher



ABOVE: Hearthwood Preserve is a 16-acre wetland located between I-205 and Johnson City in Clackamas County. It is predominantly wetland forest, which is composed of willow, red osier dogwood, Oregon ash and slough sedge.



Great Blue Heron